

## K. Replacing the Clearyl Cartridge

When display shows **COFFEE READY /CHANGE FILTER** and the **Rinse** button lights up:

- Push **Rinse** button. **DURATION 2 MIN. / START YES.**
- Remove water tank, remove old filter. Keep the extension rod. Rinse new filter under running water, attach to extension rod and install in water tank. Fill tank with fresh water and replace.

• Now proceed as explained in steps 4 through 6 above. **L) Cleaning with Special Tablet** (Machine is on)

The message **COFFEE READY / CLEAN MACHINE** appears after 220 cups of coffee. This program removes coffee oils inside the machine and takes 20 minutes.

**Important:** Do not interrupt program once started.

**Important:** Only use special round cleaning tablet.

1. Push **Rinse** button. **DURATION 20 MIN. / START YES.**

**NOTE:** To clean the S9 OT later, turn the Rotary Dial until display shows **START NO.** Push the Rotary Dial to exit the program. In this case the S9 OT will continue to remind you with the message **CLEAN MACHINE.**

2. Make sure that the water container is at least half full.
3. Push the **Rinse** Button. **EMPTY TRAY.**
4. Remove and empty the tray and the used coffee container and replace.

**Attention:** If the tray and the used coffee container are already empty, you still need to remove the tray for approx. 20 seconds and then replace it. **PRESS RINSE.**

5. Place containers (20 oz.) under the coffee spout and the frothXpress and push the **Rinse** button. Display shows **CLEANS.** After a short while you will hear a beep and display shows **ADD TABLET/PRESS RINSE.**
6. Open the ground coffee funnel lid and drop one white tablet into the opening. Close lid.
7. Push the **Rinse** button. Display shows **CLEANS.** The S9 OT starts the cleaning program by dispensing water in intervals into the containers underneath the spouts. When finished, display shows **EMPTY TRAY.**
8. Remove the tray. There will be water in the tray and in the used coffee container. Empty, clean and replace. The display shows **COFFEE READY.**
9. Clean the ground coffee funnel. Remove the funnel and rinse under hot water and dry. Replace funnel.

## M) Decalcifying **DECALCIFY MACHINE**

For different water hardness levels see Operating Instructions (page 21). If a water hardness level is selected, the decalcifying monitor is active. The machine needs to be decalcified when above message appears.

**CAUTION:** Immediately remove any splashes of the decalcifying solution from sensitive surfaces, such as natural stone or wood.

**CAUTION:** If the decalcifying solution comes in contact with the skin, rinse it off with water. If the solution comes in contact with your eyes, see a doctor.

**Important:** If you use the Clearyl filter and **DECALCIFY MACHINE** appears, then the Clearyl Activation procedure was not performed properly, see "J) Installing Clearyl...".

**Important:** Decalcifying program must not be interrupted.

Use only the special decalcifying tablets (not the cleaning tablets!). For supplies see "N) Supplies".

1. Push **Rinse** button. Display shows **DURATION 45 MIN. / START YES.**
2. Push **Rinse** button again **EMPTY TRAY.**
3. Remove and empty tray and used coffee container then replace, display shows **SOLVENT IN TANK.**

**Attention:** If the tray and the used coffee container are empty, you must remove the tray for approx. 20 seconds and then replace it.

4. Remove frothXpress system.
5. Remove the water container and empty.
6. Completely dissolve 3 large square decalcifying tablets in a container with 20 oz. of water (0.6 liters) and pour the solution into water tank.
7. Replace water tank. **SOLVENT IN TANK/PRESS RINSE**
8. Place containers under the Auto Cappuccino system and the hot water spout.
9. Push the **Rinse** button. Display shows **DECALCS** and the light in the **Rinse** button flashes. The machine pumps the solution in intervals through the Cappuccino system and the Hot Water Spout.
10. When display shows **EMPTY TRAY**, remove and empty the containers. Then carefully remove and empty the tray and the used coffee container and replace.
11. Display shows **RINSE WATER TANK/FILL WATER TANK.** Remove water tank, rinse thoroughly, fill halfway with fresh water and replace. Display shows **PRESS RINSE.**
12. Place containers under the Auto Cappuccino System and the Hot Water Spout / coffee spouts.
13. Push the **Rinse** button **DECALCS.**
14. The machine pumps fresh water through the system and stops automatically. Display shows **HEATING UP.** When display shows **MACHINE RINSING**, hot water will flow through the coffee spouts. **EMPTY TRAY.**
15. Remove and empty the containers. Then carefully remove and empty the tray and the used coffee container and replace. **COFFEE READY.**

The machine will automatically remind you when it's time to decalcify again.

**N) Supplies** can be ordered through:

Customer Service, Mail Order Form or [www.cappresso.com](http://www.cappresso.com)

- Clearyl Water Filter Cartridge: #64553
- Cleaning Tablets: #62205
- Decalcifying Tablets: #66281

**JURA-CAPRESSO CUSTOMER SERVICE: 1-800-220-5701**

M-F 9AM - 9PM; Sat. 9AM - 5PM EST

FAX: 201-767-9684 [contact@cappresso.com](mailto:contact@cappresso.com)

## Impressa S9 One Touch Quick Reference Guide

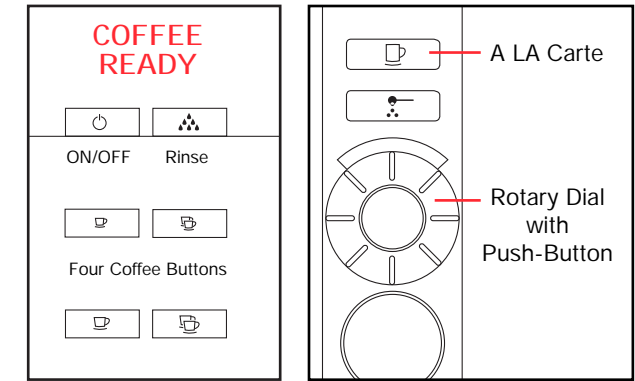
This Guide does not replace the Operating Instructions.

For details and cautions you must read all instructions.

Traces of Coffee Grounds in New Machine?

This is normal! Grinder was tested during assembly with beans.

Despite cleaning, traces of ground coffee may be found.



**RED TEXT** represents display text.

### A) First Time Ever Preparation

1. Fill water in tank and beans in bean container.
2. DO NOT install the Clearyl Filter Cartridge now!
3. Push the main power switch in the back of the machine.
4. Push the ON/OFF button in the display. When the display reads **FILL SYSTEM / PRESS STEAM** place a cup under the frothXpress and push the **Rinse** button. **SYSTEM FILLING** then **HEATING UP. PRESS RINSE.**
5. Place a cup under the coffee spouts and press the **RINSE** button. **MACHINE RINSING. COFFEE READY.**
6. Place a large cup underneath the coffee spouts and press the **1-CUP** coffee button. **1 COFFEE:** The machine starts grinding and brewing. Repeat once. Discard the first two cups of coffee.

### B) Daily Preparation

1. Fill fresh water in tank and check bean container.
2. Push **ON/OFF** button. **HEATING UP. PRESS RINSE.** Place a cup under the coffee spouts and press the **RINSE** button. **MACHINE RINSING. COFFEE READY.**

**Important:** You can only brew coffee when display shows **COFFEE READY.**

### C) Grinding and Brewing Coffee

Four pre-set coffee buttons: **1 ESPRESSO, 2 ESPRESSI, 1 COFFEE, 2 COFFEES.** These buttons are pre-set for strength (five settings), cup size (1 to 8 oz. per cup) and temperature (HIGH, NORMAL). In programming you can change all three functions.

To brew coffee:

Pre-warm cup, see "E) Using Hot Water"

**COFFEE READY.** Place a cup under the Dual Coffee Spouts and push one of the four coffee buttons. Display shows e.g. **1 ESPRESSO** and coffee flows into your cup and stops automatically. **ENJOY** then **COFFEE READY.**

During brewing you can override the strength and the cup size by turning the **Rotary Dial** (behind the door on the left side). **NOTE:** Cup size for 2-cup buttons is shown PER CUP! **Important:** You can always stop the flow of coffee by pushing any of the coffee buttons.

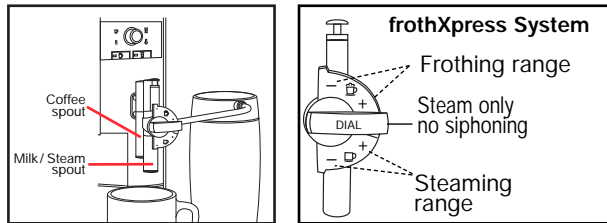
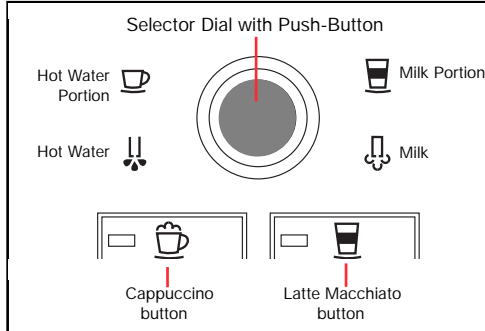
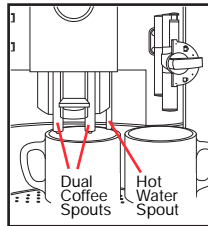
**A LA CARTE** button see Instruction Book, page 17.

#### D) Changing the Grinder Fineness

**Important:** You can only adjust the fineness during the actual grinding process.

1. Open the bean container lid and turn the dial while grinding: larger dots: coarser; smaller dots: finer.
2. For darker, oily beans, grind somewhat coarser. For lighter beans, grind somewhat finer.

**E) Using Hot Water.** Place a cup underneath the Hot Water Spout and turn the **Selector Dial** until display shows **WATER**. Push the **Selector Dial**, water begins flowing, push again to stop the water flow.



**F) One Touch Cappuccino.** The S9 OT features the Auto Cappuccino System with two spouts located behind each other. The front spout produces steam (steam nozzle). The rear spout produces high pressure brewed coffee. Attached to the steam nozzle is the removable frothXpress system. It siphons, steams and froths milk.

1. Fill the thermal milk container with milk and attach to the frothXpress system. **Important:** Make sure all parts are connected tightly, otherwise siphoning does not work.
  2. Set the frothXpress dial to the 12 o'clock position for frothing for cappuccino or to the 6 o'clock position for steaming for latte.
  3. Place a cup underneath the Cappuccino System.
  4. Push the **Cappuccino** button. The S9 OT starts grinding, the display shows **CAPPUCCINO**, then coffee strength (bean graphic). It siphons, heats and froths milk for 14 seconds and adds 2 oz. of high-pressure brewed coffee. Display shows **ENJOY** then **COFFEE READY.**
  5. For hotter milk in either position move the frothXpress dial towards the (+) plus symbols.
- NOTE:** For preparing Café Mocha, Latte Macchiato, Hot Milk and Hot Chocolate see Instruction Book (page 19).

#### G) Cappuccino Rinsing:

After preparing a beverage with milk, the S9 OT shows **COFFEE READY / RINSE CAPPUCCINO** and the **Rinse** button illuminates. It takes a few seconds and makes sure that your frothXpress is free of any milk.

- Turn frothXpress dial to the 3 o'clock position and place a cup underneath the cappuccino system.
- Push **Rinse** button **CAPPU. RINSING**. Hot water flows through the frothXpress and stops. **COFFEE READY.**
- Turn the frothXpress dial back to your preferred position.

#### H) Factory Settings, Beverage Buttons:

- All coffee buttons are set to temperature **HIGH**.
  - The hot water temperature is set to **XHIGH**.
  - 1-CUP Espresso button – 2 oz./ **STRONG**.
  - 2-CUP Espresso button – 2 oz. per cup / **XSTRONG**.
  - 1-CUP Coffee button – 5 oz./ **STRONG**.
  - 2-CUP Coffee button – 5 oz. per cup / **XSTRONG**.
  - A La Carte button – 7 oz.
  - Cappuccino; one-touch button – 14 seconds milk, 0 seconds pause, 2 oz. coffee / **NORMAL**.
  - Latte Macchiato; one-touch button – 14 seconds milk, 15 seconds pause, 2 oz. coffee / **STRONG**.
  - Milk portion; Selector Dial – 14 seconds milk.
  - Water Portion; Selector Dial – 5 oz.; **XHIGH**.
- All other settings see chapter 5, Operating Instructions.

#### I) Re-Programming, Beverage Buttons:

**Example:** Re-program the Cappuccino button to: 4.0 oz. of coffee, extra strong, milk production for 20 seconds, temperature stays as is (HIGH).

**COFFEE READY**

1. Open Front Cover and push and hold the **Rotary Dial** until the display shows **MAINTENANCE**.
2. Turn Dial to **PRODUCTS** and push Dial. Display shows **SELECT PRODUCT**.

3. Push Cappuccino button. Display shows **COFFEE 2.0 OZ.**
4. Push the Dial, **COFFEE 2.0 OZ** and turn until display shows **COFFEE 4.0 OZ.**
5. Push Dial to confirm: **CONFIRMED ✓** then **COFFEE 4.0 OZ.**
6. Turn the Dial until display shows **AROMA** and the current strength setting of three beans.
7. Push the Dial, **NORMAL** and turn until display shows **XSTRONG** with five beans.
8. Push Dial **CONFIRMED ✓** then **XSTRONG**.
9. Turn the Dial until display shows **MILK 14 SEC**
10. Push dial, **MILK 14 SEC**, and turn until display shows **MILK 20 SEC**.
11. Push Dial: **CONFIRMED ✓** then **MILK 20 SEC**.
12. Turn Dial until the display shows **EXIT** and push. **SELECT PRODUCT**.
13. If you do not want to change another button, turn Dial until the display shows **EXIT** and push. **COFFEE READY.**

For more programming options see Instruction Book, pages 24 through 29.

#### J) Installing the Clearyl Cartridge

- Rinse cartridge under running water. Snap the extension rod onto the top of cartridge. Insert into Water Tank reception, make sure tapered end fits snugly inside the fins. Close cartridge holder.
- Fill tank with cold water and replace.

#### Activating the Clearyl Cartridge:

You must activate the cartridge for the machine to monitor it properly. Otherwise the S9 OT assumes decalcifying mode.

**COFFEE READY.**

1. Push **Rotary Dial**. Display shows **MAINTENANCE**.
2. Turn Dial until display shows **FILTER NO.** Push Dial to enter the program.
3. Turn Dial until **FILTER YES** and push to confirm. **CONFIRMED ✓** then **INSERT FILTER/PRESS STEAM**. The **Rinse** button illuminates.
4. Place a 20 oz. container under the frothXpress and turn the frothXpress dial to the 3 o'clock position.
5. Push the **Rinse** button. **FILTER RINSING**. For the next 60 seconds the machine will push water through the cartridge and the frothXpress system. Initially, the water may have a slight discoloration. The program stops automatically. **COFFEE READY.**
6. Turn frothXpress dial back to your preferred setting. **Please note:** As long as the filter is activated, the water hardness setting is automatically turned off.